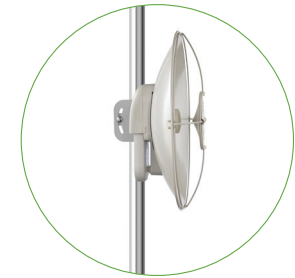


ePMP™ 110A-525 Dish

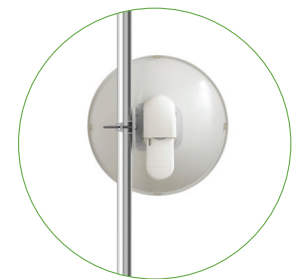
ePMP 110A-525 Dish high gain integrated antenna that offers enhanced range and improves throughput in high interference environments. ePMP 110A-525 Dish operates alongside the ePMP 1000 Connectorized Radio. Operating in the 5 GHz frequency spectrum, the solution brings wireless broadband connectivity to customers over longer distances and provides a superior return on investment.



Force 110 Front



Force 110 Side



Force 110 Back

Specifications

Product

MODEL NUMBER 5 GHz: C050900D007B, also sold as 4 pack: C050900H007B

Spectrum

FREQUENCY RANGE 5 GHz 5150 – 5970 MHz

Physical

ANTENNA CONNECTION 2 x RP (Reverse Polarity) SMA (female)

WEIGHT 3.6 kg (8 lbs)

WIND LOAD 144 km/hour (90 mi/hour)

DIMENSIONS (DIA x DEPTH) 47 cm x 27 cm (18.5 in x 10.6in)

POLE DIAMETER RANGE 5.7 cm - 7.6 cm (2.25 in - 3 in)

MATERIAL CONSTRUCTION Powder coated steel

ANTENNA PARAMETERS

5 GHz SPECIFICATION

FREQUENCY RANGE 5150 – 5970 MHz

ANTENNA TYPE DISH

PEAK GAIN 25 dBi

3dB BEAMWIDTH-AZIMUTH 7°

3dB BEAMWIDTH-ELEVATION 7°

FRONT-TO-BACK ISOLATION >25 dB

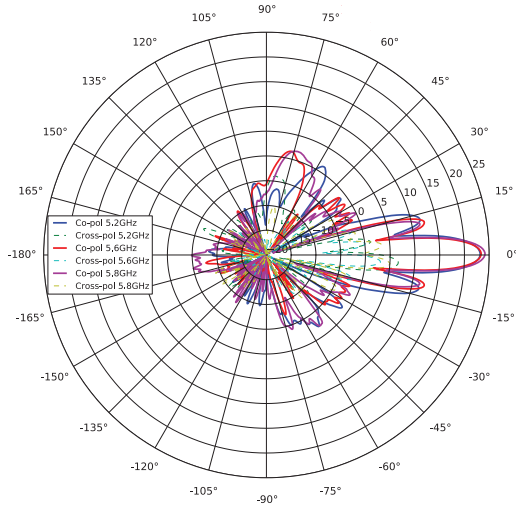
CROSS POLARIZATION >15 dB

NOTES: Product Includes: Dish, Sub-Reflector, Bracket and RF Cables

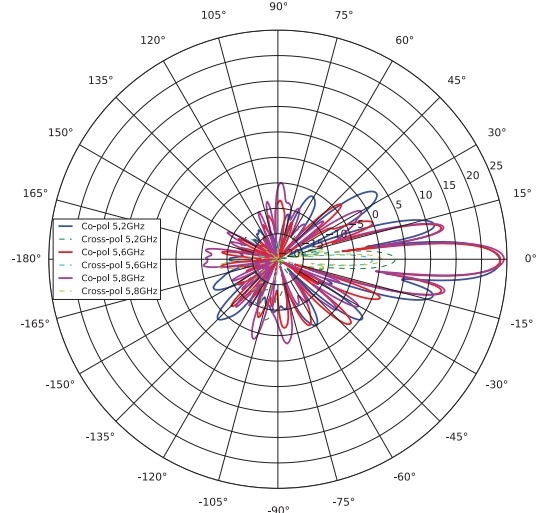
ePMP Force 110 Azimuth Patterns

ePMP Force 110 Elevation Patterns

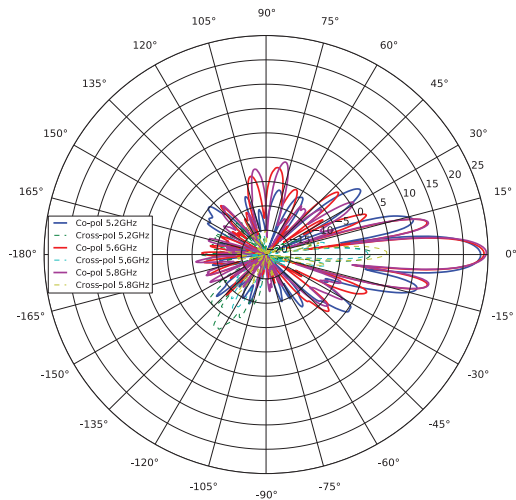
H-POL ELEVATION GAIN (dBi) FOR ZERO AZIMUTH



H-POL AZIMUTH GAIN (dBi) FOR ZERO ELEVATION



V-POL ELEVATION GAIN (dBi) FOR ZERO AZIMUTH



V-POL AZIMUTH GAIN (dBi) FOR ZERO ELEVATION

