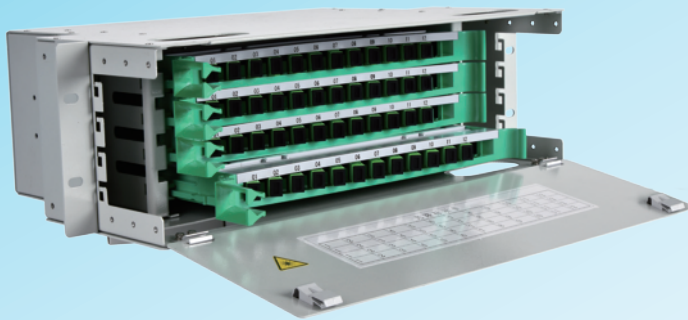


ODU series ODF sub-rack could be classified to integrated splicing & termination sub-rack and separated splicing & termination sub-rack. It usually is used in ODF rack or other telecommunication cabinets. It is a distribution and cross-connection passive equipment between optical cable and device or between different devices.



ODU sub-rack is used as a module of ODF rack, provides functions such as cable fixing, fiber protection and storage. It provides 12~216 capacity and different structures, can be selected to meet different splice and termination requirement according to specific application scenarios.

FiberHome ODU Series ODF Sub-rack

Features

- ① Used in standard 19" or 21" ODF rack
- ② Two types of design could be used indifferent scenarios
- ③ Anti-rust material, can be deployed in different environment
- ④ Easy operation and fiber management
- ⑤ Could be used together with FiberHome relevant ODF rack

Application

- ① ODF rack
- ② MODF rack
- ③ Telecommunication cabinets (indoor and outdoor)

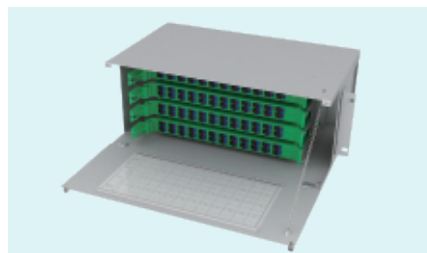
Integrated splicing and termination sub-rack

Structure

Equipped with 12F tray



Equipped with 24F tray



Features

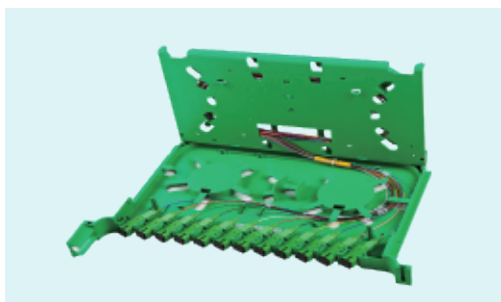
- ① It provides 12~144F capacity
- ② The installation bracket is adjustable
- ③ Different types of sub-rack should be selected according to different cable

No.	Item model	Capacity	Number of tray	Dimension (mm)	Cable type	Sub-rack		
1	ODU19T-A12-A	12	1	19"×1U×250	Outdoor loose tube	12F integrated splicing and distribution tray		
2	ODU19T-A24-A	24	2	19"×2U×250				
3	ODU19T-A48-A	48	4	19"×3U×250	Indoor loose tube			
4	ODU19T-A72-A	72	6	19"×4U×250				
5	ODU19T-A12-B	12	1	19"×1U×250				
6	ODU19T-A24-B	24	2	19"×2U×250				
7	ODU19T-A48-B	48	4	19"×3U×250	Outdoor loose tube		24F integrated splicing and distribution tray	
8	ODU19T-A72-B	72	6	19"×4U×250				
9	ODU19T-B24-A	24	1	19"×1U×260		Indoor loose tube		
10	ODU19T-B48-A	48	2	19"×2U×260				
11	ODU19T-B96-A	96	4	19"×3U×260		Outdoor loose tube		
12	ODU19T-B120-A	120	5	19"×4U×260				
13	ODU19T-B24-B	24	1	19"×1U×260				Indoor loose tube
14	ODU19T-B48-B	48	2	19"×2U×260				
15	ODU19T-B96-B	96	4	19"×3U×260				
16	ODU19T-B144-B	144	6	19"×5U×260				

Note: Larger capacity is available by customization.

● Component

12-fiber splicing and termination tray V2.0



Features

- ① Dimension: 301×180×25(mm)
- ② Support left direction patching
- ③ Configurable adapter type: SC, FC

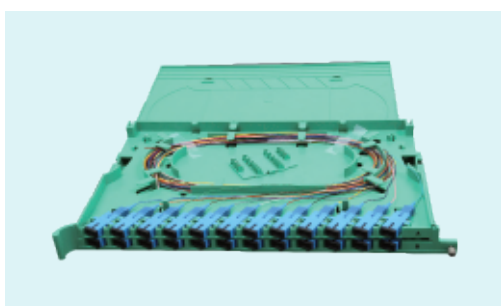
12-fiber splicing and termination tray V3.0



Features

- ① Dimension: 301×180×25(mm)
- ② Support left and right direction patching
- ③ Configurable adapter type: SC, FC

24-fiber anti-loose splice tray(24-fiber splicing and termination tray)



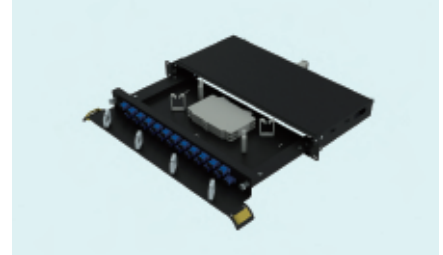
Features

- ① Dimension: 301×200×30(mm)
- ② Support left direction patching
- ③ Configurable adapter type: SC, FC

No.	Name	Capacity
1	12-fiber splicing and termination tray V2.0	12
2	12-fiber splicing and termination tray V3.0	12
3	24-fiber anti-loose splice tray	24

Separated splicing and termination sub-rack

Adapter directly installed on metallic patch panel (drawer type A)



Adapter installed on plastic fixture bar (drawer type B)



Separated splicing and termination sub-rack (rotation type)



Features

- ① 12~144F splicing and termination capacity
- ② Patch panel is on the front of sub-rack, drawer type A and type B could be selected according to the patching direction
- ③ Different types of sub-rack should be selected according to different cable

Type	Item model	Adapter installation	Spliced fibers	Dimension (mm)	Adapter optional
Drawer	ODU19RP-CSS12-B	Plastic fixture bar	12	19"×1U×250	SC, FC, Duplex LC
	ODU19RP-CSS24-B		24	19"×1U×250	
	ODU19RP-CSS48-B		48	19"×2U×250	
	ODU19RP-CSS72-B		72	19"×3U×250	
	ODU19RP-CSS96-B		96	19"×4U×250	
	ODU19RP-DSS12-B	Metallic patch panel	12	19"×1U×265	
	ODU19RP-DSS24-B		24	19"×1U×265	
	ODU19RP-DSS48-B		48	19"×2U×265	
	ODU19RP-DSS72-B		72	19"×3U×265	
	ODU19RP-DSS96-B		96	19"×4U×265	
Rotation	ODU19RPS-DSS96-A	Metallic patch panel	96	19"×2U×300	SC, FC
	ODU19RPS-CSS96-A	Plastic fixture bar	96	19"×1.5U×260	