

Introduction

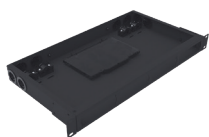
Optical Distribution Frame (ODF) is a unit for protecting the optical cable and pigtail splice in the cable laying. It is mainly used for the straight-through connection and branch connection of the indoor optical cable and the fixing of the cable terminal, and functions as a pigtail storage and protection joint.

ODF offers flexible cabling access, expandable frame design and comprehensive cable management. A series of ODF units of 12 cores, 24 cores, 48 cores, 72 cores, 96 cores & 144 cores counts type are available.

Note:

The Optical Distribution Frame is not suitable for outdoor use. If it is used, protective measures should be taken.

Special specifications can be customized according to customer requirements.



Application

- 1) Telecommunications subscriber loop.
- 2) Fiber to the home (FTTH).
- 3) LAN/WAN and metro networks.
- 4) CATV Networks.
- 5) Other applications in fiber optical systems.

Features

- 1) Standard size, light weight and reasonable structure.
- 2) Can be used in 19" standard distribution frame.
- 3) Suitable for ribbon and single fiber.
- 4) Various panel plate to fit different adapter interface.
- 5) Front mark on the plate is easy for identification and operation.
- 6) Easy for management and operation.

Accessories List

Hose Clamp*8	Countersunk Cross Screw*8	Heat Shrinkable Tubing *96	Transparent hollow tube 8000 mm	Ears for Mounting *2
				

Remark's:

Quantity of parts will be adjusted according to the quantity of fiber cores
Included Valve Bag 60x75 mm *2, 120 and 180 mm *1