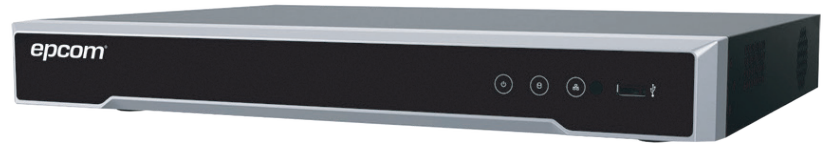


EV5004/08/TURBOX

SERIES TURBOHD DVR



Professional Video Surveillance Solutions



Key Features

Video Input and Transmission.

- Self-adaptive HDTV/HD/HD/HD/HD signal input.
- Up to 8/16-ch 8 MP IP cameras input for EV5004/08/TURBOX.
- 8 MP/5 MP/4 MP HDTV video input and live view for EV5008TURBOX, and 5 MP/4 MP for EV5004TURBOX
- Defogging function enabled for the supported analog cameras.
- Long distance transmission over UTP and coaxial cable: max. 800m for 1080p and 1200m for 720p HDTV signal.

Compression and Recording

- H.265 Pro+/H.265 Pro/H.265/H.264+/H.264 encoding for the main stream, and H.265/H.264 for the sub-stream of analog cameras.
- Connectable to H.265+/H.265/H.264+/H.264 IP cameras.
- H.265+ can be enabled to improve encoding efficiency and reduce data storage costs.
- Recording at up to 8 MP resolution.

Video Output

- Simultaneous HDMI/VGA output.
- HDMI output at up to 4K (3840 x 2160) resolution for EV5008TURBOX.
- Separate CVBS output.

Storage and Playback

- 1 SATA interface (up to 10 TB capacity per HDD).
- 4/8-ch synchronous playback.
- Smart search for efficient playback.
- Supports third-party cloud storage (Dropbox/Google Drive/Microsoft OneDrive).

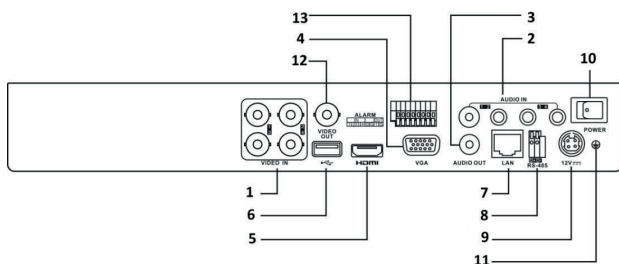
Smart Function

- Supports multiple VCA (Video Content Analytics) events for both analog and smart IP cameras.
- Supports line crossing detection and intrusion detection of all channels, and 2-ch sudden scene change detection.
- VCA information overlay in live view and smart playback.
- VQD (Video Quality Diagnostics).

Network & Ethernet Access

- Hik-Connect & DDNS (Dynamic Domain Name System) for easy network management.
- 1 RJ45 10M/100M self-adaptive Ethernet interface for EV5004TURBOX, and 1 RJ45 10M/100M/1000M self-adaptive.
- Ethernet interface for EV5008TURBOX.
- Output bandwidth limit configurable.

Dimension



The rear panel of EV5004TURBOX provides 8 video input interfaces.

Index	Description I	Index	Description
1	VIDEO IN	8	RS-485 Serial Interface
2	AUDIO IN, RCA Connector	9	12 VDC Power Input
3	AUDIO OUT, RCA Connector	10	Power Switch
4	VGA Interface	11	GND
5	HDMI Interface	12	VIDEO OUT
6	USB Interface	13	Alarm In/Out
7	LAN Network Interface		



Professional Video Surveillance Solutions

Specifications

Model		EV5004TURBOX	EV5008TURBOX	
Video/Audio input	Video compression	H.265 Pro+/H.265 Pro/H.265/H.264+/H.264		
	Analog video input	4-ch	8-ch	
	HDTVI input	BNC interface (1.0 Vp-p, 75 Ω), supporting coaxitron connection		
	AHD input	5 MP, 4 MP, 3 MP, 1080p30, 1080p25, 720p60, 720p50, 720p30, 720p25		
	HDCVI input	5 MP, 4 MP, 1080p25, 1080p30, 720p25, 720p30		
	HDCVI input	4 MP, 1080p25, 1080p30, 720p25, 720p30		
	CVBS input	PAL/NTSC		
	IP video input		4-ch (up to 8-ch)	8-ch (up to 16-ch)
			Up to 8 MP resolution	
			Supports H.265+/H.265/H.264+/H.264 IP cameras	
Audio compression	G.711u			
Audio input	4-ch, RCA (2.0 Vp-p, 1 KΩ)			
Video/Audio output	CVBS output	1-ch, BNC (1.0 Vp-p, 75 Ω), resolution: PAL: 704 × 576, NTSC: 704 × 480		
	HDMI/VGA output	1-ch, 1920 × 1080/60Hz, 1280 × 1024/60Hz, 1280 × 720/60Hz, 1024 × 768/60Hz	VGA: 1-ch, 1920 × 1080/60Hz, 1280 × 1024/60Hz, 1280 × 720/60Hz, 1024 × 768/60Hz HDMI: 1-ch, 4K (3840 × 2160)/30Hz, 2K (2560 × 1440)/60Hz, 1920 × 1080/60Hz, 1280 × 1024/60Hz, 1280 × 720/60Hz, 1024 × 768/60Hz	
	Encoding resolution	5 MP/4 MP/3 MP/1080p/720p/WD1/4CIF/VGA/CIF	8 MP/5 MP/4 MP/3 MP/1080p/720p/WD1/4CIF/VGA/CIF	
	Frame rate	Main stream: 5 MP@12fps/4 MP@15fps/3 MP@18fps 1080p/720p/WD1/4CIF/VGA/CIF@25fps (P)/30fps (N)	Main stream: 8 MP@8fps/5 MP@12fps/4 MP@15fps/3 MP@18fps 1080p/720p/WD1/4CIF/VGA/CIF@25fps (P)/30fps (N)	
		Sub-stream: WD1/4CIF/CIF@25fps (P)/30fps (N)		
	Video bit rate	32 Kbps to 10 Mbps		
	Audio output	1-ch, RCA (Linear, 1 KΩ)		
	Audio bit rate	64 Kbps		
	Dual stream	Support		
	Stream type	Video, Video & Audio		
	Synchronous playback		4-ch	8-ch
	Network management	Incoming bandwidth	32 Mbps	64 Mbps
Remote connections		32	64	
Network protocols		TCP/IP, PPPoE, DHCP, Hik-Connect, DNS, DDNS, NTP, SADP, NFS, iSCSI, UPnP™, HTTPS, ONVIF		
Hard disk	SATA	1 SATA interface		
	Capacity	Up to 10 TB capacity for each disk		
External interface	Two-way audio input	1-ch, RCA (2.0 Vp-p, 1 KΩ) (using the 1 st audio input)		
	Network interface	1, RJ45 10M/100M self-adaptive Ethernet interface	1, RJ45 10M/100M/1000M self-adaptive Ethernet interface	
	USB interface	2 × USB 2.0		
	Serial interface	RS-485 (half-duplex)		
	Alarm in/out	4/1	8/4	
General	Power supply	12 VDC		
	Consumption (without HDD)	≤ 10 W	≤ 20 W	
	Working temperature	-10 °C to +55 °C (+14 °F to +131 °F)		
	Working humidity	10% to 90%		
	Dimensions (W × D × H)	315 × 242 × 45 mm (12.4 × 9.5 × 1.8 inch)		
	Weight (without HDD)	≤ 1.16 kg (2.6 lb)	≤ 2 kg (4.4 lb)	